

Green Living

Special Content
Provided by
Sustainable
Woodstock



East End Park Is a ‘Jewel’ in the Making

The community Park at river’s edge in Woodstock’s East End is being transformed. What was once considered a “jungle” is gradually becoming a “jewel” of a park. As stubborn winter melts into true spring, the community can experience the Park’s ongoing transformation as more plantings and amenities are gradually being added.

How did the Park project get started?

In 2009 the East End Action Group of Sustainable Woodstock determined that the best way to spur economic revitalization in the East End was to move the snow dump away from the riverfront. Not only would that prevent further pollution of the Ottauquechee River, but it would also unlock the possibility of creating a community Park. Working with Village Trustees, Sustainable Woodstock has led that effort, enabling Woodstock to build an environmentally friendly snow dump elsewhere, which was used for the first time this winter. Over the last 8 years, Sustainable Woodstock volunteers have created a basic year-round Park—which also affords the only public access to the river in the Village.

How has the community been involved so far?

Dozens of community volunteers have donated hundreds of hours of labor annually to establish some long-term plantings in the Park’s riparian buffer. Along with donated professional help and materials from local companies, Sustainable Woodstock has organized annual cleanup and planting days, battled the invasive plants such as knotweed, and kept the Park area mowed and maintained over the years.

What’s happening at the Park now?

People have already been enjoying the Park. It is the ideal place to stroll, to romp on the lawn with kids, to sit on the stone wall and eat lunch, or just to take in the stunning view across the river to Billings Farm and the Pomfret hills.

Now that the snow dump is re-

moved, public events are being planned. Launching the 2018 season is “East End Eats”, a food truck festival on Saturday, May 12. Sustainable Woodstock is hosting this free event in support of further developing the Park. Next up is the Second Annual Duck Derby on Saturday, July 21. This family event, complete with prizes for first finishers in the duck derby, will raise funds for more Park improvements.

What still needs to be done?

Volunteer work continues. A new Edibles Garden is being planned for the eastern end of the Park. At a work day on Sunday, May 6, volunteers will plant blueberries, raspberries, strawberries, and rhubarb. The goals are to provide a ground cover with native plants and to create a local food source.

In addition, Sustainable Wood-

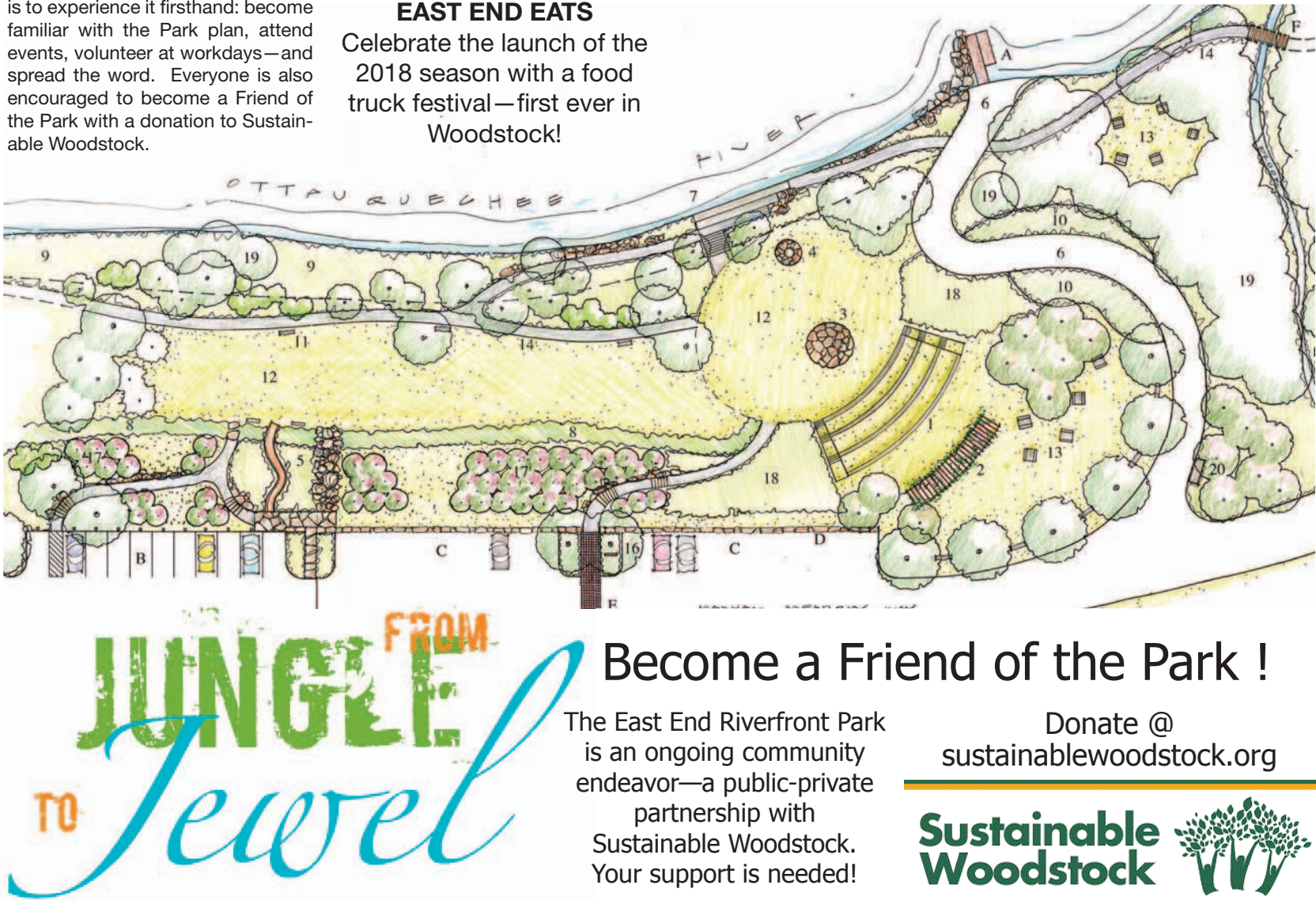
stock is continuing the build-out of the Park over the next two years with an exciting plan designed by local landscape architect Jack Rossi. The plan includes necessary infrastructure such as irrigation and pathways, amenities such as tables and benches, as well as innovative design elements such as an amphitheater and slide & rock climb. To complete all of those improvements, Sustainable Woodstock will raise additional funds.

How can people support the Park?

The best way to support the Park is to experience it firsthand: become familiar with the Park plan, attend events, volunteer at workdays—and spread the word. Everyone is also encouraged to become a Friend of the Park with a donation to Sustainable Woodstock.

With community support, the East End Park can include:

- Amphitheater
- Pergola
- Slide & rock climb
- Edible gardens
- Apple orchard
- Benches
- Picnic tables
- Walking path
- Bike rack
- River access



Become a Friend of the Park !

The East End Riverfront Park is an ongoing community endeavor—a public-private partnership with Sustainable Woodstock. Your support is needed!

Donate @ sustainablewoodstock.org



2009	2010	2011	2012	2013	2014	2015	2016	2017	2018
• East End Action Group (EEAG) formed	• Park plan presented to Trustees and community stakeholders	• Tropical Storm Irene removes 1/3 acre of park land	• EEAG promotes relocation of snow dump • Village removes dilapidated buildings	• State Ecosystem Restoration grant for site improvements • Village approves buying land for new snow dump and pays for design work	• Second State grant improves site • EEAG secures \$175,000 grant to build new snow dump	• Volunteers continue to clean up site • Village receives Park and Ride grant	• Village purchases new snow dump site: EEAG raises 50% of funds • New snow dump construction completed	• First Annual Duck Derby • Volunteers added perennial plants • Winter '17-'18 - New snow dump in use	• East End Eats • Second Annual Duck Derby



Follow East End Eats at the Park !

Facebook: <https://www.facebook.com/events/200911174012254/>

Instagram: @eastendeatsvt

Email: eastend@sustainablewoodstock.org

